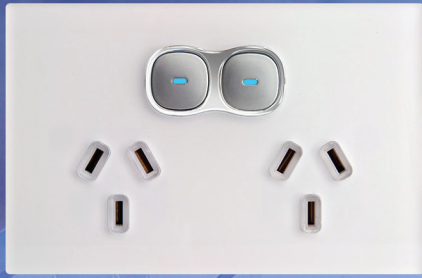


TRANSCO



Manufacturer of
Innovative
Electrical Supplies



1 EURO LARGE DOLLY
SWITCHES & POWER SOCKETS



2 OPAL GLASS FASCIA
SWITCHES & POWER SOCKETS



4 SLIM WAFER
SWITCHES & POWER SOCKETS



6 ELITE
SLIM WAFER SWITCHES



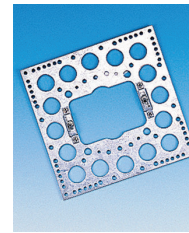
7 NEPTUNE WEATHERPROOF
SWITCHES & POWER SOCKETS



8 POWERCLIP
SWITCHES & POWER SOCKETS



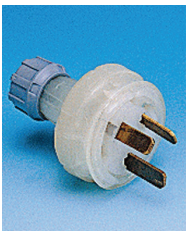
9 EXPLORER CARAVAN
SUPPLIES



10 MOUNTING
ACCESSORIES



12 IP66 INDUSTRIAL
SWITCHGEAR



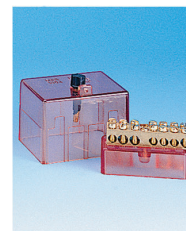
14 PLUG & SOCKET



15 RCD MCB



16 SWITCHBOARD & ENCLOSURE



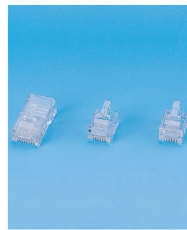
17 SWITCHBOARD
ACCESSORIES



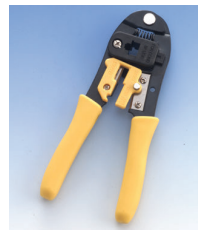
18 CONDUIT FITTING



20 CABLE WIRING



21 DATA
COMMUNICATION &
OTHER ACCESSORIES



22 TOOL



23 LED EMERGENCY LIGHT
& LED EMERGENCY DISK LIGHT



24 EXHAUST FAN



25 FLUORESCENT
FITTING



26 FASTCONNECT
SOCKET & CABLETAP



28 TEMPORARY SITE
POWER BOARD



29 PORTABLE
POWER OUTLET

EURO

Large Dolly Series

LARGE DOLLY

Size: 72mm x 117mm
Fixing centres: 84mm



SWITCH 1 GANG
LARGE DOLLY

CODE: S1L



SWITCH 2 GANG
LARGE DOLLY

CODE: S2L



TV SOCKET
LARGE DOLLY

CODE: TVL PAL TVFL F-type



RJ45 SOCKET
LARGE DOLLY

CODE: RJ1L



POWER POINT SINGLE
LARGE DOLLY

CODE: P1L

LARGE DOLLY LARGE FORMAT

Size: 120mm x 120mm
Fixing centres: 84mm



SWITCH 1 GANG
LARGE DOLLY LARGE FORMAT

CODE: S1LL



SWITCH 2 GANG
LARGE DOLLY LARGE FORMAT

CODE: S2LL



SWITCH 3 GANG
LARGE DOLLY LARGE FORMAT

CODE: S3LL



SWITCH 4 GANG
LARGE DOLLY LARGE FORMAT

CODE: S4LL



POWER POINT DOUBLE
LARGE DOLLY LARGE FORMAT

CODE: P2LL



POWER POINT SINGLE EXTRA SWITCH
LARGE DOLLY LARGE FORMAT

CODE: P1XLL

PRESS BUTTON



PRESS SWITCH
PUSH BUTTON
ROCKERLESS MECHANISM
NEON INDICATOR

CODE: S1PL



The plug & play adaptor
Universally integrates with any standard electrical accessories, including other brands' switches, dimmers, RJ45, TV sockets, etc



- Accessibility
- Durability
- Flexibility
- Stylish
- Easy Installation

TRANSCO
living excellence

OPAL Glass Fascia

Patent Pending

Switches and Power Sockets

Affordable Luxury

Perfect Touch to complete your décor



S1G

S2G

S3G

S4G

S5G

S6G

10 Amp rating

Seamless Glass-look Design

The exclusive design enables glass-look on **whole faceplate including socket** making OPAL the only one on the market achieving desired seamless appearance

Push Button with LED Indicator

All switches and sockets come with sightly-convex flat push buttons, featuring **rockerless press** mechanism and ON/OFF **LED** function

Easy to Retrofit

OPAL is **Australian approved** and easy to retrofit to **standard wall bracket**



10 Amp rating

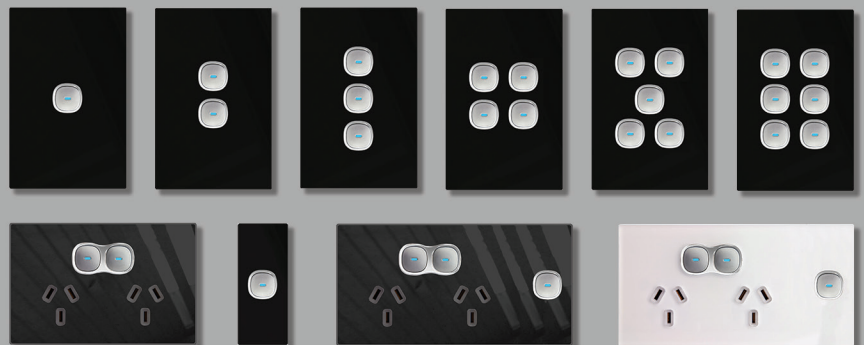
P2G

AS1G



The Opal range is completed with TV, pay TV, data, dimmers and USB sockets. You can do it all with Transco Opal.

Transco Opal features edgeless glass look, sharp refined edges, and light emitting diode indication. They will suit any modern home, blending beautifully with chrome, stainless steel and glass splash backs.



The kitchen is the heart of the modern home. It is often renovated and many times reinvented. Now this pivotal space has modern outlets & switches to complement your vision.



OPAL

For those with an eye for detail

TRANSCO

SLIM WAFFER series

Slim, Sleek, Modern
Flush on wall



Patented



POWER POINT SINGLE

Sleek modern ultra thin single power point on 2mm thin plate.

CODE: P1W P1W/15
RATING: 10A 15A



POWER POINT SINGLE WITH EXTRA SWITCH

Sleek modern ultra thin single power point with extra switch on 2mm thin plate.

CODE: P1XW
RATING: 10A



POWER POINT SINGLE WITH TWO EXTRA SWITCHES

Sleek modern ultra thin single power point with extra switch on 2mm thin plate.

CODE: P1XXW
RATING: 10A



POWER POINT TWIN

Sleek modern ultra thin twin power point on 2mm thin plate.

CODE: P2W P2W/15
RATING: 10A 15A



POWER POINT TWIN WITH EXTRA SWITCH

Sleek modern ultra thin twin power point with an extra switch on 2mm thin plate.

CODE: P2XW
RATING: 10A



POWER POINT VERTICAL

Sleek modern ultra thin twin power point on 2mm thin plate.

CODE: P1VW
RATING: 10A



POWER POINT TWIN VERTICAL

Sleek modern ultra thin twin power point on 2mm thin plate.

CODE: P2VW
RATING: 10A

USB



- Dual 10Amp AC outlets, 240 Volt
- Dual 2.1A USB DC outlets, 5 Volt
- 2mm edge profile
- Fits standard plaster clip and bracket
- (L)112mm x (W)72mm x (D)26mm

POWER POINT TWIN DUAL USB

Sleek modern ultra thin twin power point on 2mm thin plate with dual 2.1A USB sockets.

CODE: P2W/USB

DOUBLE POLE socket is also available for Caravan and Outdoor purpose.



POWER POINT SINGLE DOUBLE POLE

Sleek modern ultra thin single power point on 2mm thin plate DOUBLE POLE.

CODE: P1DW
RATING: 10A



POWER POINT TWIN DOUBLE POLE

Sleek modern ultra thin twin power point on 2mm thin plate DOUBLE POLE.

CODE: P2DW
RATING: 10A



**SWITCH**

Sleek modern ultra thin switch on 2mm thin plate.

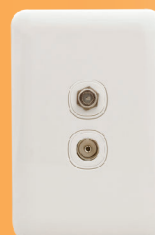
CODE:	S1W	S2W	S3W
	1 gang	2 gang	3 gang
CODE:	S4W	S5W	S6W
	4 gang	5 gang	6 gang

**SWITCH ARCHITRAVE**

Sleek modern ultra thin switch on 2mm thin architrave plate.

CODE:	AS1W	AS1W/15
RATING:	10A	15A
	1 gang	

CODE:	AS2W	AS2W/15
RATING:	10A	15A
	2 gang	

**TV COAX SOCKET**

Sleek modern ultra Pay TV & TV socket on 2mm thin plate.

CODE:	TVFW
	Pay TV

CODE:	TVW
	Free TV

**RJ45 SOCKET**

Sleek modern ultra thin RJ45 socket on 2mm thin plate.

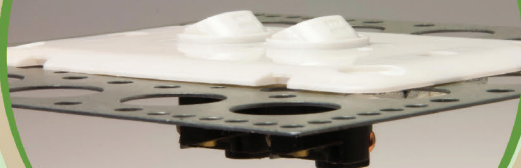
CODE:	RJ1W
-------	-------------

SLIM **WAFER**

thinnest 2 mm

FLUSH FIT

standard bracket

**VS****NOT FIT**

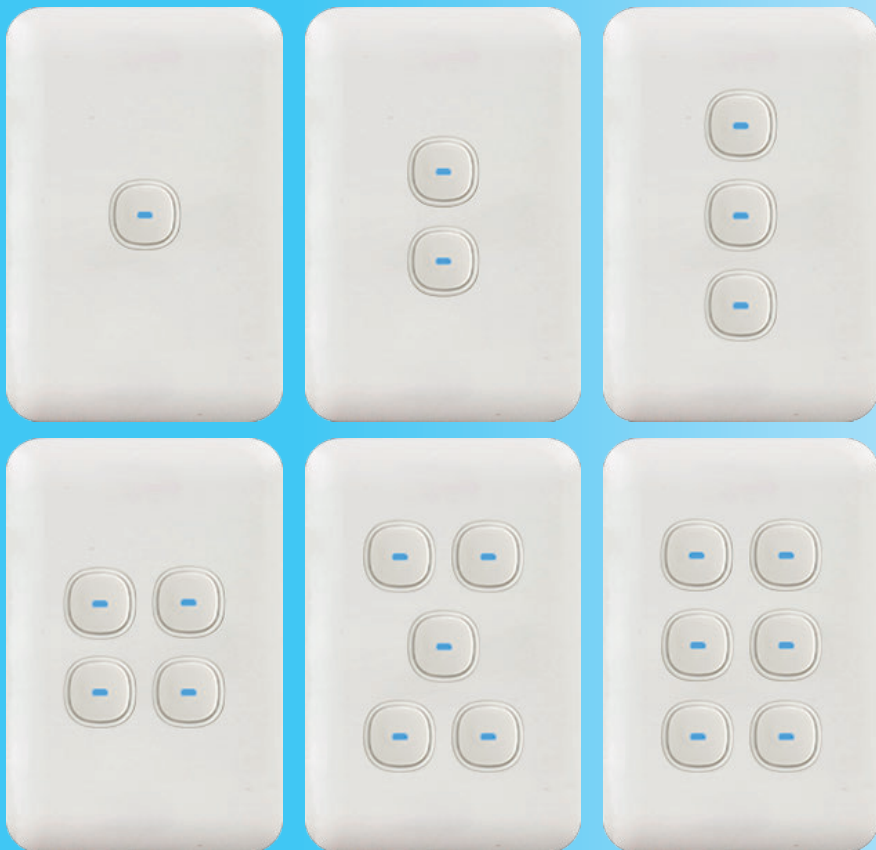
standard bracket

**PATENTED**

FIT standard bracket & mounting block
WITHOUT template

REQUIRE :

special bracket &
mounting block
special hole cut template



LED Indicator

4-states configurable blue LED indicator on button

Rockerless Push Button

Transco rockerless push buttons have soft press mechanism

PRESS SWITCH

Sleek modern ultra thin rockerless press switch on 2mm thin plate.

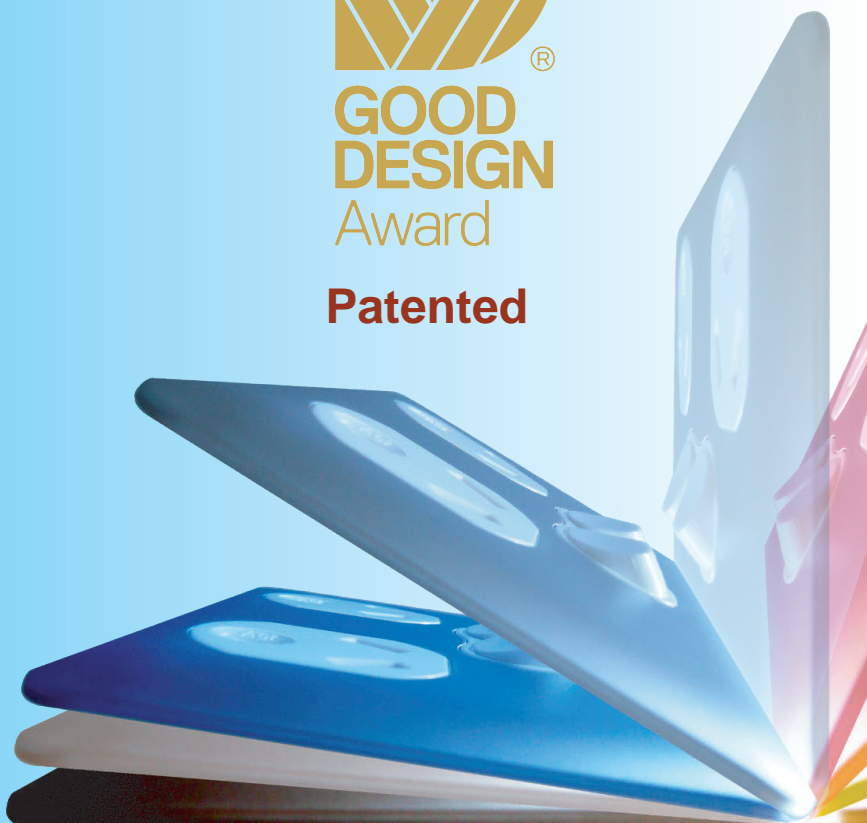
CODE:	S1E	S2E	S3E
	1 gang	2 gang	3 gang
CODE:	S4E	S5E	S6E
	4 gang	5 gang	6 gang



PRESS SWITCH ARCHITRAVE

Sleek modern ultra thin rockerless press switch on 2mm thin architrave plate.

CODE:	AS1E	AS2E
	1 gang	2 gang





Australian Design
Award Winner

The only **IP65** Standard Flush Mount outlet on the market



Inlet Membrane Shutter



Neon Indicator



Neoprene Protected Switch



Rear Gasket



Slim Double Outlet Double Pole

Ideal for caravans, site shed, building site



CODE: P2DWS



CODE: P2DWS/B



First time for caravans
having double power point
with neon indicator
and real switch



IP65 Outlet Double Pole



CODE: P2D/PPO



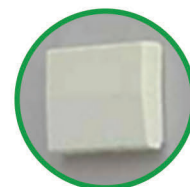
Slim Double Outlet

Ideal for household wet space

balconies
outdoor areas
kitchens
bathrooms



CODE: P2WS



No more bulky
outdoor outlet



IP53 Outlet

Inlet Membrane Shutter
Membrane separation technology



CODE: P1WP/S

CODE: P2WP

CODE: P1WP

High-Rated IP



Inlet Membrane Shutter

IP66 Switch

Membrane separation technology
Standard flush mount



CODE: S1WP

CODE: S2WP

CODE: S4WP

2 OUTLETS



POWER POINT TWIN

CODE: P2 P2/15
RATING: 10A 15A



POWER POINT TWIN WITH EXTRA SWITCH

CODE: P2X



POWER POINT TWIN VERTICAL

CODE: P2V
RATING: 10A



POWER POINT TWIN VERTICAL WITH EXTRA SWITCH

CODE: P2VX
RATING: 10A

4 OUTLETS



POWER POINT 4 OUTLET BOARD DOUBLE POLE

SIZE: 196mm x 78mm x 26mm. FIXING CENTRES: 84mm.
CODE: P4D

TV & RJ45 SOCKET

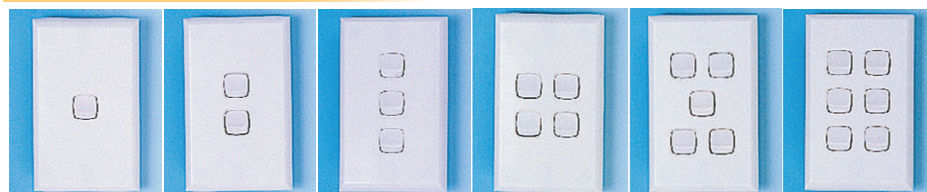


TV / PAY TV F-TYPE / RJ45 SOCKET

Size: 73mm x 118mm. Fixing centres: 84mm.

CODE: TV TVF RJ1
TV PAY TV F-TYPE RJ45

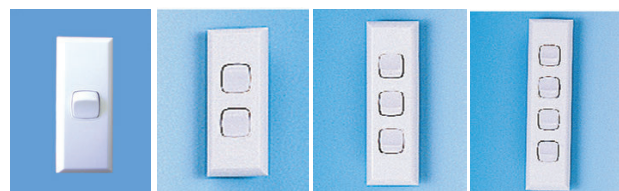
SWITCH



SWITCH 1 ~ 6 GANG

Size: 73mm x 118mm. Fixing centres: 84mm.

CODE: S1 ~ S6
RATING: 10A



SWITCH ARCHITRAVE 1 ~ 4 GANG

CODE: AS1 AS2 AS3 AS4

SIZE: 36mm x 85mm 36mm x 85mm 36mm x 111mm 36mm x 135mm

1 OUTLET



POWER POINT SINGLE

CODE: P1 P1/15 P1/20
RATING: 10A 15A 20A



POWER POINT SINGLE WITH EXTRA SWITCH

CODE: P1X P1X15
RATING: 10A 15A



POWER POINT SINGLE WITH TWO EXTRA SWITCHES

CODE: P1XX



POWER POINT SINGLE VERTICAL

CODE: P1V
RATING: 10A



POWER POINT SINGLE VERTICAL WITH EXTRA SWITCH

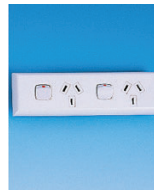
CODE: P1VX
RATING: 10A

NARROW series



POWER POINT SINGLE NARROW

Used for skirting boards etc.
Size: 46mm x 89mm. Fixing centres: 78mm.
CODE: P1N



POWER POINT TWIN NARROW

Used for skirting boards etc.
Size: 158mm x 45mm x 11mm. Fixing centres: 137mm.
CODE: P2N
Similar to P2N but with one 10A and one 15A outlet.
CODE: P2N/15



SWITCH NARROW 1 GANG

Used for places like thin skirting. Size: 35mm x 95mm.
CODE: S1N

EXPLORER



2
SOCKET



IP65

Slim Outlet

Flush Mount
with Neon Indicator



P2DW5

PATENT

DOUBLE
POLE



12V DC socket

Cigarette Lighter Socket
Outdoor

OLDC



2.1A Fast Charge + 1A Normal Charge

DUAL USB Socket

with LED Indicator

OLUSB/I

Flush Mount
Indoor

OLDC/USB

Surface Mount
Outdoor



Outlet

OL10 OL15
10 A 15 A



Inlet

IL10 IL15
10 A 15 A



Mounting Flange

MF13C MF20C
13 mm 20 mm



TV / AV socket



TVO



OLAV

PATENT

DOUBLE
POLE

SLIM WAFFER

World's Thinnest Profile 2 mm



P2DW



AS2W



S1W

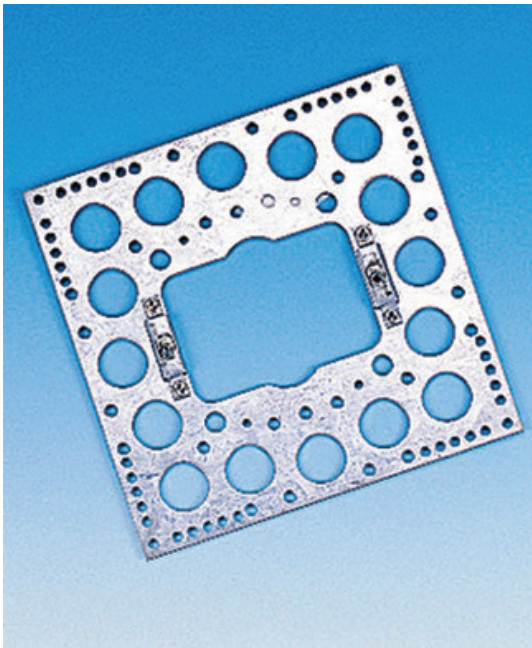
POWER POINT TWIN DUAL USB

DOUBLE
POLE



P2D/USB

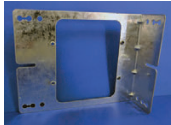
TRANSCO



PLASTER BRACKET
Used for fastening of powerpoints and switches into plaster walls.
CODE: PB



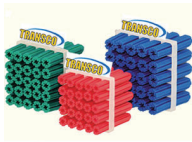
PLASTER BRACKET FOR LARGE DOLLY
For Large Dolly series. Used for fastening of powerpoints and switches into plaster walls.
CODE: PBL



STUD BRACKET FOR LARGE DOLLY
For Large Dolly series. Used for fastening of powerpoints and switches into brick or wood frame walls.
CODE: SBL



STUD BRACKET
Used for fastening of powerpoints and switches into brick or wood frame walls.
CODE: SB



WALL PLUGS

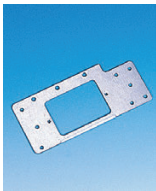
CODE:	WP630	WP730	WP840
COLOUR:	RED	GREEN	BLUE
SIZE:	6MM	7MM	8MM
PACK:	500	500	250



PLASTER CLIP
Used for fastening of powerpoints and switches into plaster walls.
CODE: PC



INSULATING SHROUD
Used to cover wire connections and terminals behind switches and powerpoints
CODE: ISH



FLAT BRACKET
Used for fastening of powerpoints and switches into brick or wood frame walls.
CODE: FB



NAIL BRACKET VERTICAL
Used for fastening of powerpoints and switches into wood frame walls.
CODE: NBV



NAIL BRACKET HORIZONTAL
Used for fastening of powerpoints and switches into wood frame walls.
CODE: NBH



MOUNTING BLOCK

Suits all standard and powerclip switches and powerpoints.

CODE: MB MB/B
COLOUR: White Black
SIZE: 117L x 73W x 38D



MOUNTING FLANGE

Suit all standard and powerclip switches and powerpoints.

CODE: MF16 MF16/B MF16/S
COLOUR: White Black Silver
DEPTH: 16mm

CODE: MF20 MF20/B MF20/S
COLOUR: White Black Silver
DEPTH: 20mm



MOUNTING BLOCK ARCHITRAVE

Suit all standard and powerclip architrave.

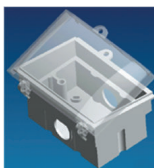
CODE: MB/AS MB/AS/B
COLOUR: White Black
SIZE: 85L x 35W x 38D



IP53 MOUNTING BLOCK

Used for mounting weatherproof powerpoints and switches on solid walls c/w neoprene gasket seal to maintain IP rating.

CODE: MB/WP
DEPTH: 38mm



IP44 WEATHERPROOF ENCLOSURE WITH CLEAR LID

These enclosures are used to fit PowerClip or standard range and suitable for protected outdoor use.

CODE: WENC



WALL BOX PLASTIC

Used for fastening of powerpoints and switches into concrete or slurry walls.

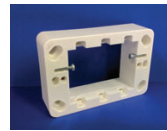
CODE: WBP



WALL BOX METAL

Used for fastening of powerpoints and switches into concrete or slurry constructions.

CODE: WBM



MOUNTING FLANGE

FOR SLIM WAFER SERIES

Suits slim WAFER series switches and powerpoints.

CODE: MFW10 MFW20 MFW30
COLOUR: White White White
DEPTH: 10mm 20mm 30mm

CODE: MFW10B MFW24B MFW30B
COLOUR: Black Black Black
DEPTH: 10mm 24mm 30mm



MOUNTING FLANGE ARCHITRAVE FOR SLIM WAFER SERIES

Suits slim WAFER series architrave switches.

CODE: MB/ASW10W MB/ASW20W
COLOUR: White White
DEPTH: 10mm 20mm

CODE: MB/ASW10B MB/ASW20B
COLOUR: Black Black
DEPTH: 10mm 20mm



MOUNTING FLANGE FOR P2DWS

Specially made for Transco IP65 DOUBLE POLE weatherproof GPO.

CODE: MF/P2DWS MF/P2DWS/B
COLOUR: White Black



MOUNTING FLANGE FOR CARAVAN SOCKET

Suits RV inlets and outlets.

CODE: MF13C MF20C
COLOUR: White White
DEPTH: 13mm 20mm

CODE: MF13C/B MF20C/B
COLOUR: Black Black
DEPTH: 13mm 20mm

IP66 INDUSTRIAL SWITCHGEAR

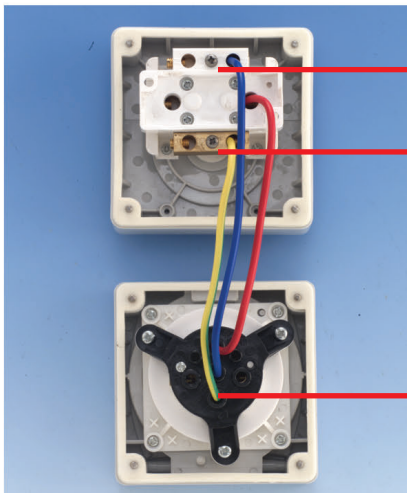
Australian/NZ Pin Configuration



1
2,3
4
5
6

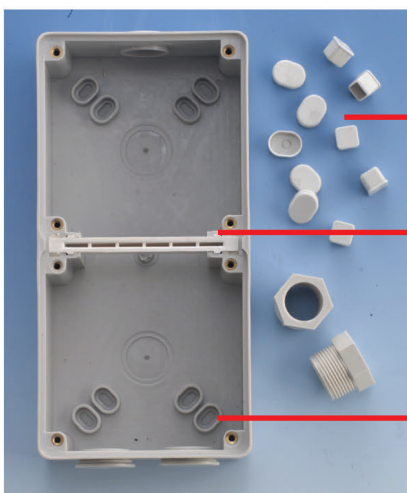
- 1 - The body is made from **polyamide 6.6** material.
This material is **chemical resistant** in its standard form. (i.e petroleum acids, alkalines, detergent reducing and oxidizing agents etc.)
- The body is **UV stable** making it ideal for use in the outdoors
- Contains **no halogens or PVC** which will reduce toxic fumes in the event of fire
- The body is **extremely strong** and passes steel ball drop test, 100mm Dia 4KG drop 0.7m high

- 2 - **I.E.C colour coding** for switch handles
Blue = 240V single phase
Red = 415V three phase



7
8
9

- 3 - **Padlockable** in off position
- 4 - **Lid hinged on the front** and not on the side to ensure that the ingress of dust and water is not possible
- 5 - **Cover is flush with body** and not protruding
- 6 - **Flush fitting latch** provides an easy opening action
- 7 - **Heavy duty contact wiring block** for all their 240V and 415V Combinations and Isolators
- 8 - The switch contact block comes **complete with neutral and earth terminals** for ease of installation



10
11
12

- 9 - All their switches and sockets are **pre-wired** for faster and easier of installation
- 10 - **Plastic cap cover** for Stainless steel screws
- 11 - Removable clip on bridge to make it easier for installation and an **extra seal** to maintain genuine IP66 rating
- 12 - **Neoprene O rings** for conduit entries thus negating the need for glue

SWITCHED COMBINATION



SINGLE PHASE SWITCHED COMBINATION 3 FLAT PIN SOCKETS

Single phase isolation padlockable switch and 3 flat pin sockets
Size: 100(W) x 200(L) x 95(D)

66C310	66C315	66C320
10A	15A	20A



THREE PHASE SWITCHED COMBINATION 4 ROUND PIN SOCKETS

Three phase isolation padlockable switch and 4 round pin sockets
Size: 100(W) x 200(L) x 95(D)

66C410	66C420	66C432	66C440	66C450
10A	20A	32A	40A	50A



THREE PHASE SWITCHED COMBINATION 5 ROUND PIN SOCKETS

Three phase isolation padlockable switch and 5 round pin sockets
Size: 100(W) x 200(L) x 95(D)

66C510	66C520	66C532	66C540	66C550
10A	20A	32A	40A	50A

TRANSCO

IP66

Industrial Switchgear



SUNSET SWITCH

Rated at 15A with adjustable lux control range of 5~100 Lux. Also known as Photoelectric Cell. SSS

ISOLATION SWITCH



SINGLE PHASE ISOLATION SWITCHES

Earth and neutral link c/w 240V blue padlockable switch handle
Size: 100(W) x 100(L) x 95(D)

66S110	66S115	66S120	66S135	66S150
10A	15A	20A	35A	50A



THREE PHASE ISOLATION SWITCHES

Earth and neutral link c/w 415V red padlockable switch handle
Size: 100(W) x 100(L) x 95(D)

66S310	66S315	66S320	66S332	66S340	66S350
10A	15A	20A	32A	40A	50A

ADAPTABLE BOX



SINGLE ADAPTABLE BOX IP66

Weatherproof connections with side conduit entries
Size: 100(W) x 100(L) x 95(D)
ADP100



DOUBLE ADAPTABLE BOX IP66

Weatherproof connections with side conduit entries
Size: 100(W) x 200(L) x 95(D)
ADP200

SOCKET OUTLET



THREE PHASE SOCKET OUTLET WITH 3 FLAT PIN SOCKETS

Clear flat cover, heavy duty return action spring, 3 flat pin sockets
Size: 100(W) x 100(L) x 95(D)

66SO310	66SO315	66SO320
10A	15A	20A



THREE PHASE SOCKET OUTLET WITH 4 ROUND PIN SOCKETS

Clear flat cover, heavy duty return action spring, 4 round pin sockets
Size: 100(W) x 100(L) x 95(D)

66SO410	66SO420	66SO432	66SO440	66SO450
10A	20A	32A	40A	50A

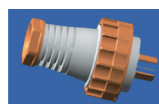


THREE PHASE SOCKET OUTLET WITH 5 ROUND PIN SOCKETS

Clear flat cover, heavy duty return action spring, 5 round pin sockets
Size: 100(W) x 100(L) x 95(D)

66SO510	66SO520	66SO532	66SO540	66SO550
10A	20A	32A	40A	50A

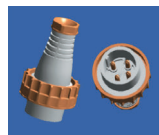
INDUSTRIAL PLUG



SINGLE PHASE PLUG 3 FLAT PINS

Plug c/w screw on cap for use on Transco's Industrial 3 pin Combination and Socket Units

66P310	66P315	66P320
10A	15A	20A



THREE PHASE PLUG 4 ROUND PINS

Plug c/w screw on cap for use on Transco's Industrial 4 pin Combination and Socket Units

66P410	66P420	66P432	66P440	66P450
10A	20A	32A	40A	50A



THREE PHASE PLUG 5 ROUND PINS

Plug c/w screw on cap for use on Transco's Industrial 5 pin Combination and Socket Units

66P510	66P520	66P532	66P540	66P550
10A	20A	32A	40A	50A



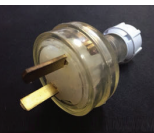
EXTENSION PLUG
For use with all cables up to 1.5mm sq for 10A and 2.5mm sq for 15A versions.
CODE: EP EP15 EP/W EP/B
RATING: 10A 15A 10A 10A
COLOUR: CLEAR CLEAR WHITE BLACK



3 PIN INSULATED SIDE ENTRY PLUG
10A. For use with all 3 core cables up to 1.5mm sq.
CODE: SEP SEP/B SEP/W
COLOUR: CLEAR BLACK WHITE



3 PIN EXTENSION PLUG ROUND EARTH
10A
CODE: EP/R



2 PIN EXTENSION PLUG DC "T PLUG"
10A
CODE: EPT



4 PIN EXTENSION PLUG
10A 500 VOLT
CODE: EP4



FLEX AND PLUG
3 cores flex with 2 pin plug or 3 pin plug. 1 Meter length.
CODE: FP2 FP3 FP2H FP3H
No of Pins: 2 PIN 3 PIN 2 PIN 3 PIN
DUTY : Light Light Heavy Heavy



EXTENSION LEAD
Complete with flex and one 3 pin plug and one 3 pin socket. Also available in different lengths.
CODE: EL03 EL05 EL10
Length: 3M 5M 10M



EXTENSION LEAD HEAVY DUTY 10M 15A
CODE: ELH10/15A



WORKING LEAD 3 PIN 2 CORE 3M
CODE: WL



EXTENSION SOCKET
For use with all cables up to 1.5mm sq for 10A and 2.5mm sq for 15A versions.
CODE: ES ES15 ES/W ES/B
RATING: 10A 15A 10A 10A
COLOUR: CLEAR CLEAR WHITE BLACK



SURFACE SOCKET WITH BASE PLATE
Complete with snap on base plate.
CODE: SS SS/15
RATING: 10A 15A



SURFACE SOCKET ROUND EARTH WITH BASE PLATE
Complete with snap on base plate.
CODE: SSR



SURFACE SOCKET DOUBLE
Complete with snap on base plate.
CODE: SSD



POLARISED SURFACE SOCKET
Female 2 flat pin socket.
CODE: SSP



SURFACE SOCKET FLUSH MOUNT
O.D.: 67mm. Fixing centres: 50mm. Suitable for mounting on conduit junction boxes.
CODE: SSF SSF/R
ROUND EARTH



PENDANT SOCKET
CODE: PS
RATING: 10A



POWERBOARDS
Complete with flex and plug and overload protection with new standard PVC covered plug pins
CODE: PB4 PB6
No of Outlets: 4 6



POWER BOARD SURGE PROTECTED
Complete with flex and plug and surge protection with new standard PVC covered plug pins
CODE: PB4SP PB6SP
No of Outlets: 4 6

RCD MCB



3 KA



4.5 KA



6KA

RCD/MCB COMBINATION 1 POLE (3KA, 4.5KA, 6KA)

IC in 3KA, 4.5KA, 6KA

Available in 10A, 16A, 20A, 25A, & 32A

CODE: RCDMCB10S ~ RCDMCB32S

IC: 3KA

CODE: RCDMCB10H ~ RCDMCB32H

IC: 4.5KA

CODE: RCDMCB10I ~ RCDMCB32I

IC: 6KA

RATING: 10A, 16A, 20A, 25A, 32A



RCD/MCB COMBINATION 2 POLE

Din rail mount, RCD/MCB combination, rated at 30mA with automatic cut off on current leakage.

Available in 10A, 16A, 20A, 25A and 32A.

CODE: RCD10MCB ~ RCD32MCB

RATING: 10A ~ 32A



RESIDUAL CURRENT DEVICE 2 POLE

Din rail mount, rated at 30mA, with automatic cut off on current leakage.

CODE: RCD2P40 RCD2P63

RATING: 40A 63A



RESIDUAL CURRENT DEVICE 4 POLE

Din rail mount, rated at 30mA, with automatic cut off on current leakage.

CODE: RCD4P40 RCD4P63

RATING: 40A 63A



CIRCUIT BREAKER 1 POLE

Din rail mount, rated at 10KA.

Available in 10A, 16A, 20A, 25A, 32A, 40A, 50A and 63A.

CODE: C1P10 ~ C1P63

RATING: 10A - 63A



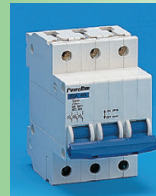
CIRCUIT BREAKER 2 POLE

Din rail mount, rated at 10KA.

Available in 10A, 16A, 20A, 25A, 32A, 40A, 50A and 63A.

CODE: C2P10 ~ C2P63

RATING: 10A - 63A



CIRCUIT BREAKER 3 POLE

Din rail mount, rated at 10KA.

Available in 10A, 16A, 20A, 25A, 32A, 40A, 50A, 63A & 80A.

CODE: C3P10 ~ C3P63

RATING: 10A - 63A



MAIN SWITCH 1 POLE

Din rail mount, rated at 6KA, with manual cut off.

CODE: MS1P63 MS1P80 MS1P100

RATING: 63A 80A 100A



MAIN SWITCH 3 POLE

Din rail mount, rated at 6KA, with manual cut off.

CODE: MS3P63 MS3P80 MS3P100

RATING: 63A 80A 100A



MAIN SWITCH SURFACE MOUNT 1 POLE

Main switch with manual cut off.

CODE: MS1P63SM MS1P80SM MS1P100SM

RATING: 63A 80A 100A



MAIN SWITCH SURFACE MOUNT 3 POLE

Main switch with manual cut off.

CODE: MS3P63SM MS3P80SM MS3P100SM

RATING: 63A 80A 100A



SURGE PROTECTOR

Din rail mount, rated at 275V 40kA.

1.9kVA. Indicates a red light when module is stressed.

CODE: SP275



TIMER 2 MODULE WIDE

Din rail mount or surface mount, 24hr and 7 day time switch with analogue operation. Contains 15A contacts and 150HR backup battery, auto on manual override.

CODE: TM



ENCLOSURE 1-4 POLE

Enclosure only, no door, no backboard, no busbar and no links

Available in 1, 2, 4 POLE

CODE: ENC1 ENC2 ENC04

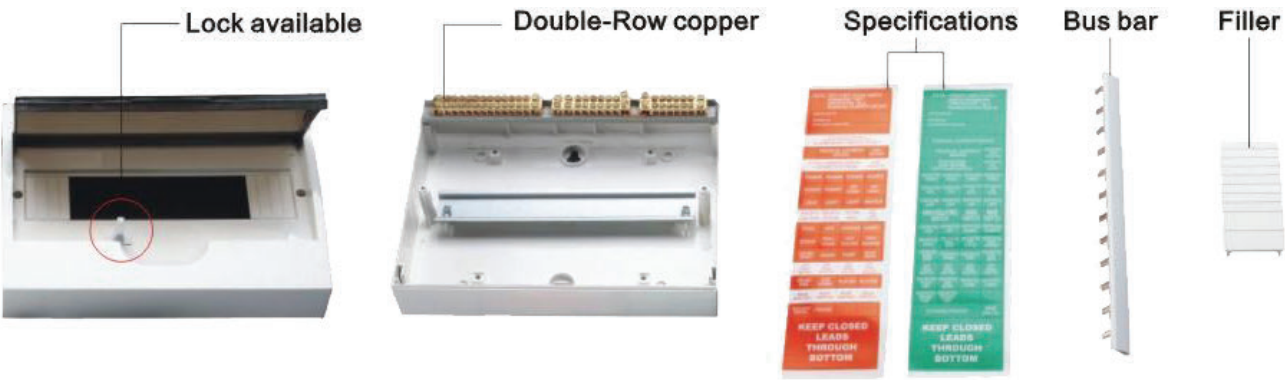


SWITCHBOARD 4-36 POLE

Complete surface mount board with door, links, busbar filler and backboard

Available in 4, 6, 8, 12, 18, 36 POLE

CODE: SB04 ~ SB36



SWITCHBOARD IP40 SURFACE MOUNT

CODE	WAYS	L x W x H (mm)
SB04	4	112 x 201 x 96
SB06	6	148 x 201 x 97
SB08	8	184 x 201 x 97
SB10	10	220 x 201 x 97
SB12	12	256 x 201 x 97
SB18	18	364 x 222 x 97
SB24	24	270 x 325 x 100
SB36	36	305 x 473 x 100



SWITCHBOARD IP40 FLUSH MOUNT

CODE	WAYS	L x W x H (mm)
SB08F	8	228 x 247 x 93
SB12F	12	305 x 247 x 93
SB18F	18	415 x 270 x 103
SB24F	24	305 x 355 x 103
SB36F	36	341 x 503 x 103



SWITCHBOARD IP55 WEATHERPROOF

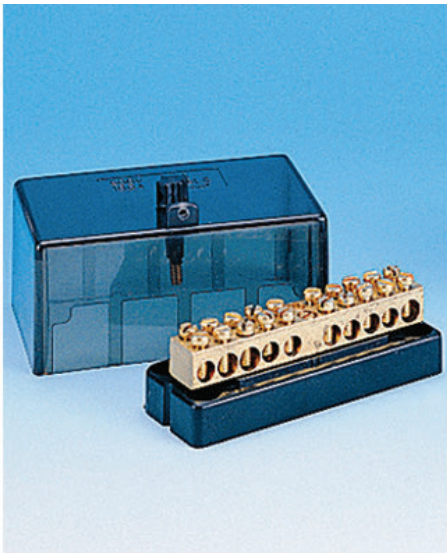
CODE	WAYS	L x W x H (mm)
SB04WP	4	126 x 215 x 100
SB06WP	6	163 x 215 x 100
SB12WP	12	272 x 215 x 100



ENCLOSURE IP30

CODE	WAYS	L x W x H (mm)
ENC01	1	34 x 130 x 60
ENC02	2	52 x 130 x 60
ENC04	4	87 x 130 x 60
ENC06	6	123 x 160 x 60
ENC08	8	160 x 160 x 60
ENC12	12	260 x 160 x 60





NEUTRAL LINK
7, 10, 14, 18 HOLE
Complete link bar with 16mm and 25mm holes and cover

CODE:	NL7	NL10	NL14	NL18
HOLES:	7	10	14	18



RCD NEUTRAL LINK 3 HOLE
Connect 1 RCD to 3 circuit

CODE: RCD/NL3



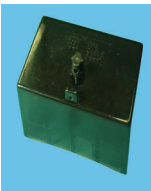
ACTIVE LINK
7, 10, 14, 18 HOLE
Complete link bar with 16mm and 25mm holes and cover

CODE:	AL7	AL10	AL14	AL18
HOLES:	7	10	14	18



SERVICE FUSE
Complete with 80A cartridge and anti-intrusion plate

CODE:	SF/B80	SF/F80
	BACK	FRONT
	WIRED	WIRED



11 HOLE LINK
Rated at 165A, with 10 , 16 , 25 , 35 mm holes
CODE: NL11 AL11
NEUTRAL ACTIVE



FUSE LINK
CODE: FUSE80 FUSE100
80A 100A



METER LINK 165A
Rated at 165A, comes in a white colour for easy labelling of active and neutral, maximum cable size 50mm.
CODE: ML165/7 ML165/13
7 HOLE 13 HOLE



EARTH CLIP
CODE: EC12 EC19
SIZE: 12MM 19MM



METER LINK 350A
Rated at 350A, comes in a white colour for easy labelling of active and neutral, maximum cable size 120mm.
CODE: ML350/7 ML350/13
7 HOLE 13 HOLE



EARTH CLAMP
Commonly used on copper or aluminium pipes
CODE: EC20
SIZE: 20MM



SWITCHBOARD POLE FILTER 1 WAY
CODE: POLE/F



CORRUGATED CONDUIT LD

This is commonly used in indoor/outdoor situations where a lot of flexible curves and bends are needed.

CODE:	CC16	CC20	CC25	CC32
SIZE:	16mm	20mm	25mm	32mm
LENGTH:	50M	50M	50M	30M

CODE:	CC40	CC50
SIZE:	40mm	50mm
LENGTH:	15M	10M



CORRUGATED CONDUIT HD

For outdoor use.

CODE:	CC20H	CC25H	CC32H
SIZE:	20mm	25mm	32mm
LENGTH:	50M	50M	30M

CODE:	CC40H	CC50H
SIZE:	40mm	50mm
LENGTH:	15M	10M



SOLID CONDUIT TEE PIECE

Used to combine or divide conduit runs where no inspection is needed.

CODE:	ST20	ST25	ST32
SIZE:	20mm	25mm	32mm



INSPECTION TEE LD

CODE:	IT20	IT25	IT32
SIZE:	20mm	25mm	32mm



ELBOW 90 Deg LD

CODE:	ELB20	ELB25	ELB32
SIZE:	20mm	25mm	32mm



INSPECTION ELBOW 90 Deg LD

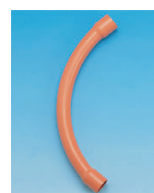
CODE:	IELB20	IELB25	IELB32
SIZE:	20mm	25mm	32mm



BENDS 90 Deg LD

CODE:	BEND20	BEND25	BEND32
SIZE:	20mm	25mm	32mm

CODE::	BEND40	BEND50	BEND63
SIZE:	40mm	50mm	63mm



SWEEP BEND HEAVY DUTY 90 DEG

CODE:	SB20H	SB25H	SB32H
SIZE:	20mm	25mm	32mm

CODE:	SB40H	SB50H	SB63H
SIZE:	40mm	50mm	63mm



SWEEP BEND MEDIUM DUTY 90 DEG

CODE:	SB20	SB25	SB32
SIZE:	20mm	25mm	32mm

CODE:	SB40	SB50
SIZE:	40mm	50mm



SWEEP BEND COMMUNICATION 90 DEG

CODE:	SB20COM	SB25COM	SB32COM
SIZE:	20mm	25mm	32mm

CODE:	SB40COM	SB50COM
SIZE:	40mm	50mm



JUNCTION BOX 20mm SHALLOW LD

CODE:	JB1-20S	JB2-20S	JB2-20SA
SIZE:	1 WAY	2 WAY	2 W ANGLE

CODE:	JB3-20S	JB4-20S
SIZE:	3 WAY	4 WAY



JUNCTION BOX 20mm DEEP LD

CODE:	JB1-20	JB2-20	JB2-20A
SIZE:	1 WAY	2 WAY	2 W ANGLE

CODE:	JB3-20	JB4-20
SIZE:	3 WAY	4 WAY



JUNCTION BOX 25mm SHALLOW LD

CODE:	JB1-25S	JB2-25S	JB2-25SA
SIZE:	1 WAY	2 WAY	2 W ANGLE

CODE:	JB3-25S	JB4-25S
SIZE:	3 WAY	4 WAY



JUNCTION BOX 25mm DEEP LD

CODE:	JB1-25	JB2-25	JB2-25A
SIZE:	1 WAY	2 WAY	2 W ANGLE

CODE:	JB3-25	JB4-25
SIZE:	3 WAY	4 WAY



END PLUGS

Push-in type, for sealing of conduit, junction boxes and adaptable boxes.

CODE	EP20	EP25
SIZE:	20mm	25mm



JUNCTION BOX CUP

Disposable cup with lugs to suit the deep junction box.

CODE:	JBCUP
-------	-------



COUPLERS LD

CODE:	CP20	CP25	
SIZE:	20mm	25mm	
CODE:	CP32	CP40	CP50
SIZE:	32mm	40mm	50mm



REDUCERS

CODE:	RD2016	RD2520	RD3225
SIZE:	20-16mm	25-20mm	32-25mm
CODE:	RD4032	RD5040	
SIZE:	40-32mm	50-40mm	



CABLE GLANDS IP66

Cable glands with a UL rating of 94. Used for termination of cables in weatherproof conditions.

CODE:	CG16	CG20	CG25
SIZE:	16mm	20mm	25mm
CODE:	CG32	CG40	CG50
SIZE:	32mm	40mm	50mm



HALF SADDLES GALVANISED

CODE:	HS16	HS20	HS25
SIZE:	16mm	20mm	25mm
CODE:	HS32	HS40	HS50
SIZE:	32mm	40mm	50mm



EXTENSION RING

Used to extend the length of junction box entries.

CODE:	ER12	ER25
SIZE:	12mm	25mm



CONDUIT LOCATOR

Used to locate conduit in brick walls and concrete slabs etc

CODE:	CL20	CL25	CL32
SIZE:	20mm	25mm	32mm



PLAIN-SCREWED ADAPTER

CODE:	ADP20	ADP25	ADP32	ADP40
SIZE:	20mm	25mm	32mm	40mm



STRAIGHT GLAND

CODE:	SG20	SG25
SIZE:	20mm	25mm



MALE AND FEMALE BUSH

CODE:	BUSH20M/F	BUSH25M/F	BUSH32M/F
SIZE:	20mm	25mm	32mm
CODE:	BUSH40M/F	BUSH50M/F	
SIZE:	40mm	50mm	



HALF SADDLES STAINLESS STEEL

CODE:	HS20/SS	HS25/SS
SIZE:	20mm	25mm



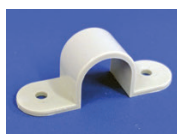
CONDUIT CAP HEAVY DUTY

CODE:	EC32H	EC40H	EC50H	EC63H
SIZE:	32mm	40mm	50mm	63mm
CODE:	EC80H	EC100H	EC125H	EC150H
SIZE:	80mm	100mm	125mm	150mm



LOCKNUT

CODE:	LN20	LN25	LN32
SIZE:	20mm	25mm	32mm



FULL SADDLES PLASTIC

CODE:	FS20P	FS25P	FS32P
SIZE:	20mm	25mm	32mm



SMALL SCREW CONNECTORS 1 & 2 SCREW

Used to connect loose cables together.

CODE:	CN1T	CN2T
TYPE:	1 SCREW	2 SCREW
	100pc	50pc



CONNECTORS 2 SCREW

Used to connect loose cables together.

CODE:	CN216	CN235
SIZE:	16mm ²	35mm ²



TERMINAL BLOCK 50mm

Used to connect power conductors of up to 50mm, 3 way. Made out of polycarbonate for extra security.

CODE:	TM350
SIZE:	3 x 50mm Entries



IP66 ADAPTABLE BOX SINGLE

Weatherproof connections with side conduit entries

CODE:	ADP100
SIZE:	100x100x95



IP66 ADAPTABLE BOX DOUBLE

Weatherproof connections with side conduit entries

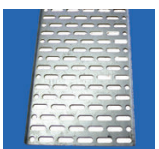
CODE:	ADP200
SIZE:	200x100x95



IP44 ADAPTABLE BOX SINGLE

CODE:	ADP77	ADP108
SIZE:	77x77x54	108x108x76

CODE:	ADP208
SIZE:	211x108x81



CABLE TRAY

ZINC COATED premium steel.

Used for keeping cable bundled together . 2.4 m

CODE:	CTR75	CTR100	CTR150
SIZE:	75mm	100mm	150mm

CODE:	CTR200	CTR300	CTR450
SIZE:	200mm	300mm	450mm



JUNCTION BOX

Each junction box has a unique lock clip on cover which contains a three way terminal block.

CODE:	JBS
SIZE:	SMALL 50x46x25

CODE:	JBM
SIZE:	MEDIUM 69x69x37

CODE:	JB
SIZE:	LARGE 88x47x47



CABLE TIES NYLON BLACK

CODE:	CT160B	CT200B	CT250B
SIZE:	160mm	200mm	250mm
PACK:	100	100	100

CODE:	CT300B	CT390B	CT540B
SIZE:	300mm	390mm	540mm
PACK:	100	100	100

CODE:	CT200B1K	CT250B1K	CT300B1K
SIZE:	200mm	250mm	300mm
PACK:	1000	1000	1000



CABLE CLIPS FOR 2C +E CABLE

Used for clipping cable on to the wall

CODE:	CC10	CC13	CC15
CABLE:	3x1.5	3x2.5	3x4.0
PACK:	500	500	250



SPRING CLIP SADDLES

Used to mount conduits on overhead beams, in places such as a warehouse etc.

CODE:	SCS1620	SCS2532
CABLE O.D:	11-20mm	21-32mm

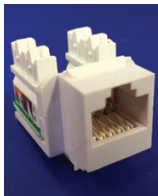


INSULATION PVC TAPE

CODE:	TAPE/MIX	TAPE/BK	TAPE/BLUE
COLOUR:	MIX	BLACK	BLUE

CODE:	TAPE/RED	TAPE/WHITE	TAPE/GY
COLOUR:	RED	WHITE	GREEN-YELLOW

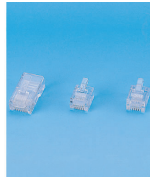
DATA COMMUNICATION & OTHER ACCESSORIES



RJ SOCKET

Straight termination. ACA approved.

CODE: RJ45SKTC6 RJ12
PIN: 8 PIN 6 PIN



RJ PLUG

Straight termination. ACA approved.

CODE: RJ45PC6 RJ12P
PIN: 8 PIN 6 PIN



JUMPERABLE COVER

Fit jumperable frame. AUSTEL APPROVED.

CODE: JF11C JF27C
WAY: 11 WAY 27 WAY



JUMPERABLE FRAME

Fit up to 11 or 27 connect or disconnect modules. AUSTEL APPROVED.

CODE: JF11 JF27
WAY: 11 WAY 27 WAY



10 PAIR MODULE

UL80 PBT, damp proof, antioxidant phosphor bronze. Used for connecting telephone pairs. AUSTEL APPROVED.

CODE: MD10C MD10D
TYPE: CONNECT DISCONNECT



DISTRIBUTION BOX

Fits up to 5 connect or disconnect modules. Complete with cover. AUSTEL APPROVED.

CODE: DB3 DB5
TYPE: 3 WAY 5 WAY



CONNECTORS FOR NON STRIPPED WIRE

For connecting non-stripped telephone cables in one crimp, also known as scotch locks.

CODE: CNN1 CNN2 CNN3
TYPE: 1 WIRE 2 WIRE 3 WIRE



INSERTION TOOL

This great tool is used to punch down, strip and cut cat5e cable. AUSTEL APPROVED

CODE: ITOOL



SURFACE MOUNT HOUSING

For mounting on flush surfaces.

RJ45 socket not included. ACA approved.

CODE: SMH1 SMH2
PORT: 1 PORT 2 PORT



PATCH PANEL

24 Way or 32 Way for large networking.

RJ45 sockets included. AUSTEL approved.

CODE: PP24 PP32
WAY: 24 WAY 32 WAY



SUNSET SWITCH

Rated at 15A with adjustable lux control range of 5~100 Lux. Also known as Photoelectric Cell.

CODE: SSS



RUBBER VIBRATION MATS

Used to cushion the feet of the out door unit on a split and ducted air conditioners.

CODE: AVR
PACK: 4



BATTEN HOLDER

BC lamp holder socket with skirt and base plate, takes BC globes only.

CODE: BH BH/B
COLOUR: WHITE BLACK



BATTEN HOLDER LARGE BC

BC lamp holder socket. Large 86mm diameter skirt. Two fixing centres at 50mm and 72mm.

CODE: BHL



BATTEN HOLDER WITH PLUGS

BC lamp holder socket with skirt and base plate and nylon plugs, takes BC globes only.

CODE: BHP



CEILING ROSE

Complete with 4 terminals, less cord for use as pull switch on ceiling to activate lamp.

CODE: CR CR/B
COLOUR: WHITE BLACK



JIG SAW
Used to cut gyprock, with a firm handle grip for comfort, and a sharp heavy duty blade.
CODE: JSAW



PLIER, ELECTRICAL 9"
Firm grip, and heavy duty jaw made with CR-V alloy steel , 1000V
CODE PLIER/ELE



PLIER, LONG NOSE 8"
Firm grip, and heavy duty jaw made with CR-V alloy steel , 1000V
CODE PLIER/LN



PVC CONDUIT CUTTER
Used to cut conduit from sizes between 16-40mm
CODE PC40



WIRE CUTTER 9"
CODE WC09



RJ12 & RJ45 CRIMPER
Used to crimp and strip RJ12, and RJ45 plugs on to the end of telephone/cat5e cable, with ratchet handle
CODE RJCRIMP



RG59 & RG6 STRIPPER
Used to strip RG6, and RG59 coax cable, with adjustable settings
CODE RGSTRIP



1/4" ARBOR DRILL BIT
Used for holesaws, they have a 5/8" thread to suit holesaws 14-30mm and 31-200mm with an 11mm chuck.
CODE: ARBOR1 ARBOR2
CHUCK: 11mm 11mm
SIZE: 14-30mm 31-200mm



HOLE SAW
Used to cut gyprock, steel, wood, and aluminium. Made from bi-metal high speed steel (HSS), Superior M42 grade.
CODE: HSW20 HSW22 HSW25 HSW32
SIZE: 20mm 22mm 25mm 32mm

CODE: HSW40 HSW51 HSW70 HSW76
SIZE: 40mm 51mm 70mm 76mm

CODE: HSW80 HSW86 HSW89 HSW92
SIZE: 80mm 86mm 89mm 92mm

CODE: HSW95 HSW102
SIZE: 95mm 102mm



PORTABLE POWER OUTLET

CODE: PPO10 PPO15
RATING: 10A 15A





LED EMERGENCY
EXIT LIGHT
QUICK CONNECT SLIDING BRACKET

CODE: TRA/LED/EXIT

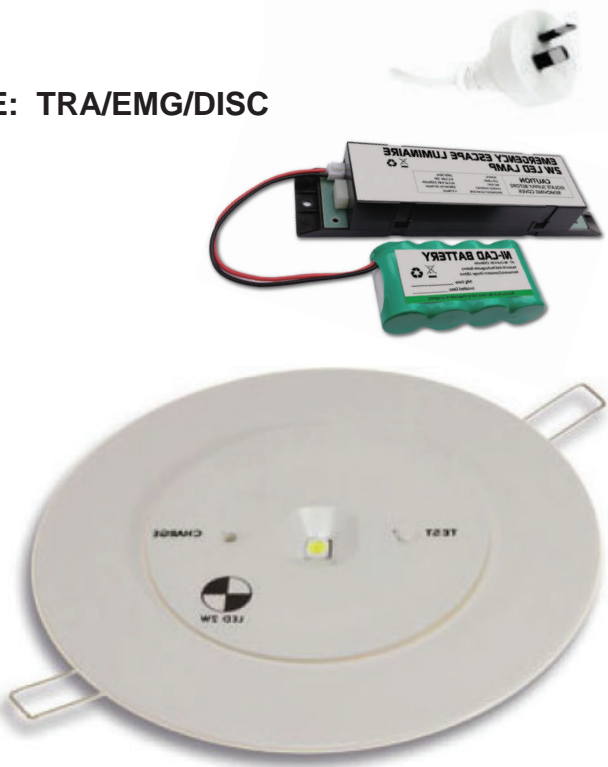


- Wall or Ceiling mounting
- Junction box mounting option
- Single & Double sided options
- Battery over charge and discharge protection
- Easy to install and maintain
- Large terminal
- Diffuser sign changeable
- AS2293 24m view 3 hours

LED EMERGENCY DISC LIGHT

- Recessed emergency LED light
- AS2293 E32 Classification
- Small (85mm) & Large (140mm) plate options
- 2m lead & plug
- Battery overcharge and discharge protection
- Easy to install and maintain
- Reliable and durable

CODE: TRA/EMG/DISC



Meet AS2293 Classificaton of E32

Complete with 85mm head &140mm plate

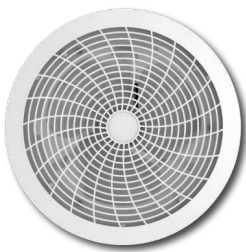
Spacing Table (Distance between fittings)												
Mounting height (m)	2.1	2.4	2.7	3	3.3	3.6	4	5	6	7	8	10
E32	9.4	10.2	11.2	12	12.8	13.4	14.4	16.2	17.8	19	19.8	20.8



TURBO EXHAUST FAN

CODE: EF8
CUT OUT: 240x240 mm

Clears steams and odours quickly
Ball bearing motor thermal cut out
Low noise
Backdraft shutter
100mm duct
With plug and lead
270x270mm fascia with metal center



CEILING EXHAUST FAN 200 MM

CODE: EF200C
CUT OUT: 200 mm

Attractive slim line grill
Efficient, quiet motor
Easy clean, snap on/off grill
Easy do-it-yourself installation
Thermal cut out
Durable ball bearing motor
Plug in power lead
38W efficient, quiet fan



CEILING EXHAUST FAN 250 MM

CODE: EF250C
CUT OUT: 250mm



WALL EXHAUST FAN

CODE: EF/W100 EF/W150
CUT OUT: 100mm 150mm

Applications are wall, ceiling, and window
Powerful fans producing 27.7L per sec (100mm) & 83.3L per sec (150mm)
Low noise 40db (100mm) & 43db (150mm)
Seven bladed fan
Low torque start-up to reduce inrush current thus reducing electrical operating costs



FLEXIBLE DUCT BARE

Used primarily for the use of ventilation

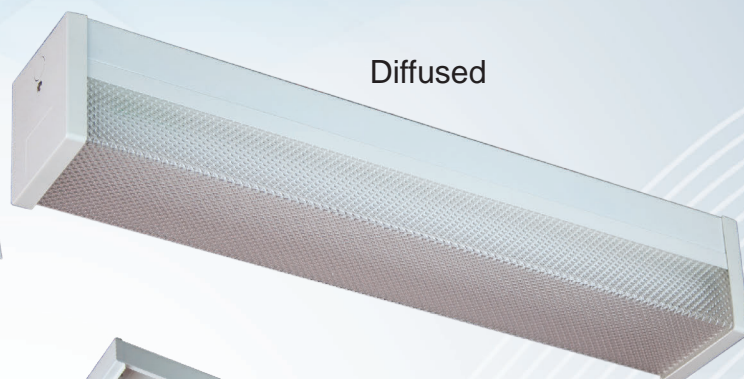
CODE: FDB100 FDB125 FDB150 FDB200 FDB250
6M X 100mm 125mm 150mm 200mm 250mm

TRANSCO Fluorescent Fitting

- Triphosphor tubes by Osram
- Robust powder coated batten
- Cable entry grommet
- Mount directly to the ceiling or a junction box
- Precise prismatic diffuser efficiently delivers crisp & clean light
- Electronic ballasts by Tridonic
- Insect-free and dust-free structure
- Large terminal



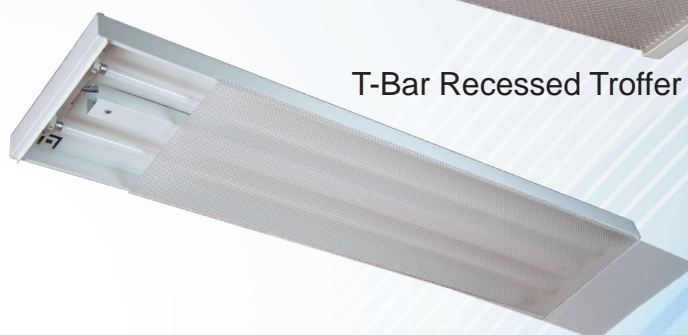
Bare Batten



Diffused



Wire Guard



T-Bar Recessed Troffer



IP66 Weatherproof

			Bare Batten	Diffused	Wire Guard	IP66 Weatherproof	T-Bar Recessed Troffer
T8	2FT	1 x 18W	F118	F118D	F118WG	F118WP	
		2 x 18W	F218	F218D	F218WG	F218WP	
	4FT	1 x 36W	F136	F136D	F136WG	F136WP	
		2 x 36W	F236	F236D	F236WG	F236WP	F236TB
T5	4FT	1 x 28W	F128T5	F128DT5	F128WGT5		
		2 x 28W	F228T5	F228DT5	F228WGT5		F228TBT5
LED	4FT	1 x 18W	F118LED	F118DLED	F118WGLED		
		2 x 18W	F218LED	F218DLED	F218WGLED		

FastConnect Socket

A better and perfect
connection every time



Australian Design
Award Winner

**Save time
Save money
Avoid risk**



5 SECONDS
Easy & Efficient



**No Stripping
No Screwing
No Cutting
No Twisting
No Mistake**



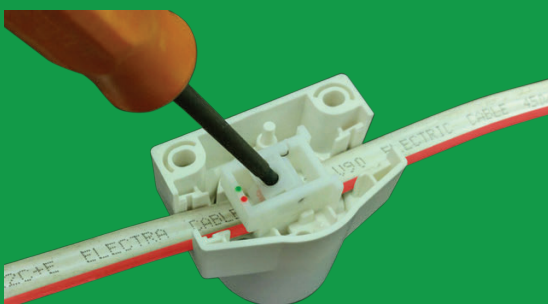
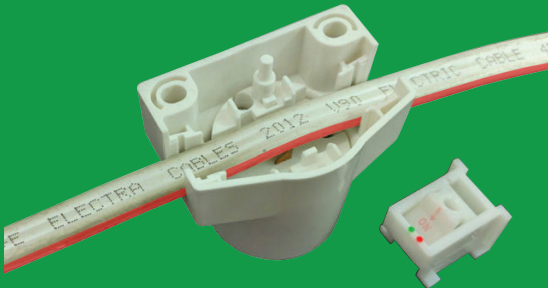
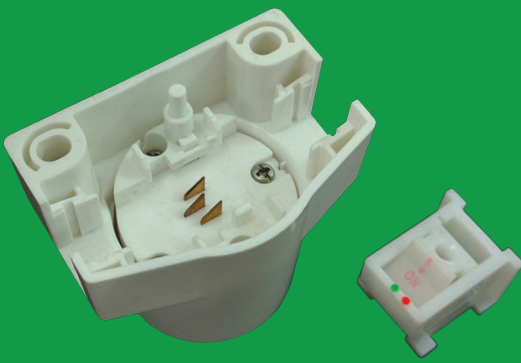
FastConnect Socket

*1.5 mm² and 2.5 mm²
cable 240V a.c. 10A*

CODE: SSF

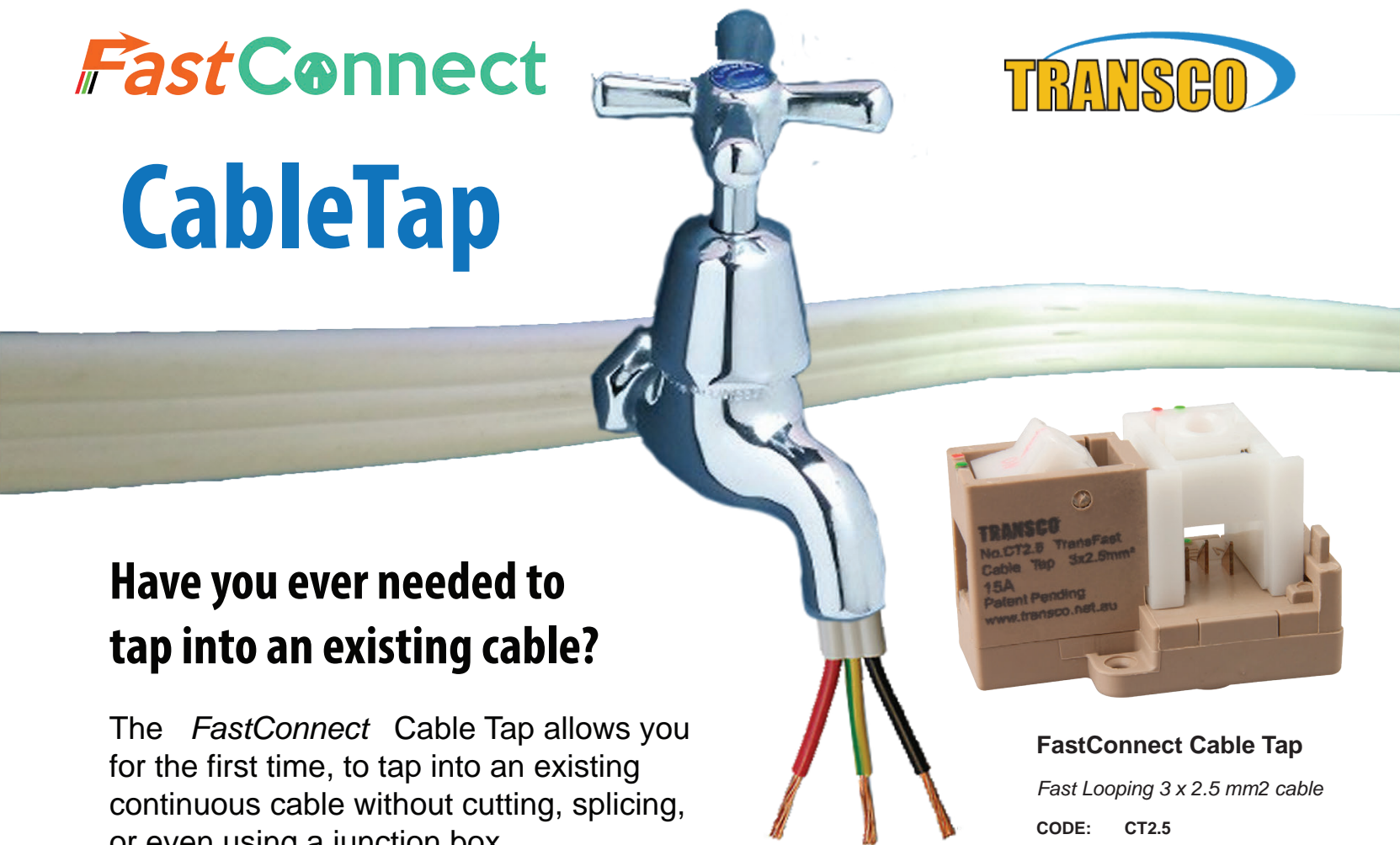
Australian Approved
Patented

TRANSCO



FastConnect CableTap

TRANSCO



Have you ever needed to tap into an existing cable?

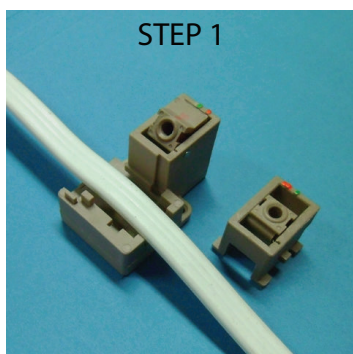
The *FastConnect* Cable Tap allows you for the first time, to tap into an existing continuous cable without cutting, splicing, or even using a junction box.

Time saved, money saved, less time in uncomfortable places.

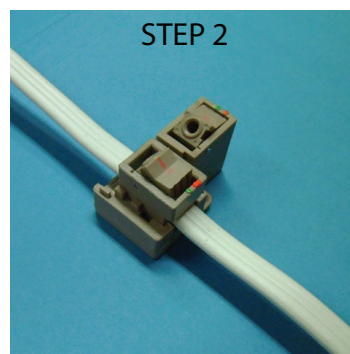
FastConnect Cable Tap

Fast Looping 3 x 2.5 mm² cable

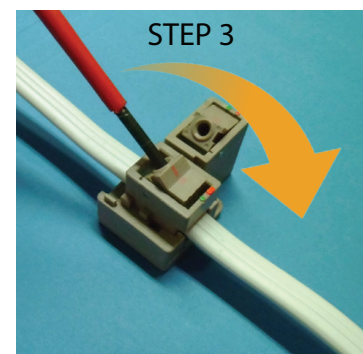
CODE: CT2.5



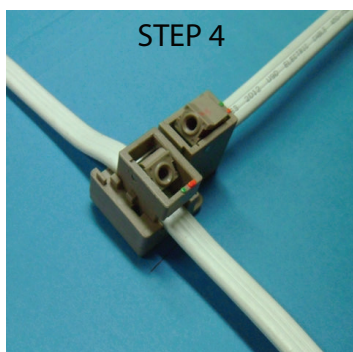
1. REMOVE CAM & PLACE CABLE



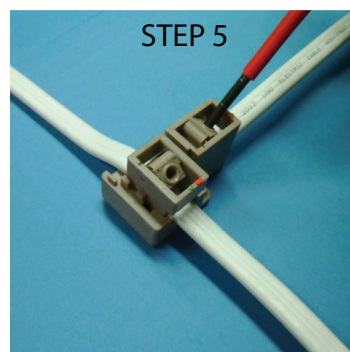
2. PLACE CAM BACK ON TAP



3. INSERT DRIVER TO CAM SLOT & PULL ALL THE WAY ACROSS



4. PLACE LOOPING CABLE INTO TAP



5. INSERT DRIVER TO CAM SLOT & PULL ALL THE WAY ACROSS



Australian Design
Award Winner

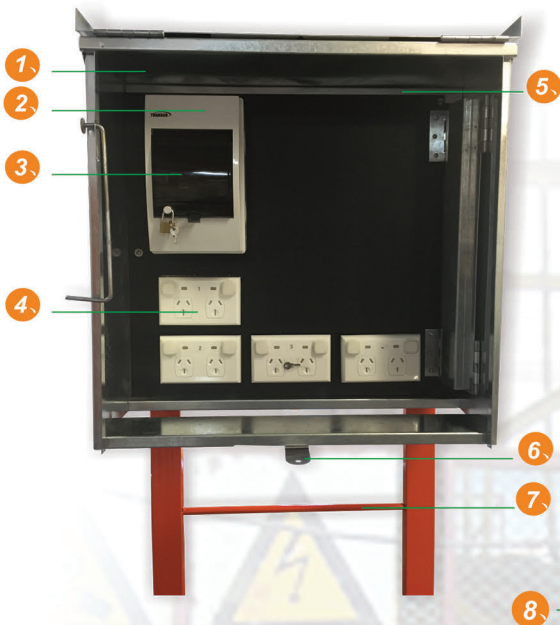
Australian Approved
Patented

TEMPORARY SITE POWER BOARDS

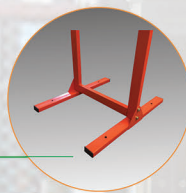
- Genuine double pole IP65 switched outlet
- Neon indicators
- IP66 switch box with padlock
- Shippable around Australia
- Complied to AS/NZS 3012

TSB1

Single Phase Temporary Site Power Board



1. 490x490mm galvanized robust metal box
2. IP56 switch box with padlock
3. 6ka, 30mA RCD/MCB and 10ka main switch
4. Genuine double pole IP65 switched outlet with neon indicators, ample space between outlets
5. Anti intrusion frame sealing
6. Lockable latch
7. Powder coated high visibility frame
8. Knockdown reinforced feet with predrilled ground mounting holes



TSB3

Three Phase Temporary Site Power Board



with three phase main switch
and three phase RCD/MCB protected outlet



with three phase
IP66 5pin 32a switched
combination socket



PORTABLE POWER OUTLET

FOR INDUSTRIAL AND BUILDING SITES



CODE

PPO10 10A 240V
PPO15 15A 240V



- DOUBLE POLE MECHANISMS FOR SAFETY.
- CURRENT LEAKAGE, SHORT CIRCUIT, AND OVERLOAD PROTECTION.
- DUST AND MOISTURE/WATER RESISTANT (IP53).
- HIGHLY VISIBLE ORANGE CASE.
- POLYCARBONATE CASING.
- POWER OUTLET RECESSED FOR ADDED PROTECTION.
- LARGE STURDY BASE WITH ANCHOR HOLES FOR STRENGTH AND STABILITY.
- THE HEAVY DUTY POWER CORD CAN BE FULLY WOUND ONTO UNIT.
- CLEAR COVER OVER RCD/MCB FOR ADDED PROTECTION & EASY ACCESS





Manufacturer of
Innovative
Electrical Supplies



GOOD
DESIGN
AWARD®
WINNER




Patented
Specified
Approved in Australia
Australian International
Design Award



 transco.net.au

 (02) 9764 2600

 sales@transco.net.au

 199 Parramatta Rd Homebush West NSW 2140